



$$e = \sum_{n=0}^{\infty} \frac{1}{n!} = \lim_{n \rightarrow \infty} \left(\frac{1}{0!} + \frac{1}{1!} + \frac{1}{2!} + \dots + \frac{1}{n!} \right)$$

Wireless	UVHYC4005R-28	UVHYC4001R-27
Frequency range	2200 - 2560 MHz	4900 - 6100 MHz
Output power	28 dBm ± 1.5 dB	27 dBm ± 1.5 dB
Channel bandwidth	2.5 - 40 MHz	2.5 - 40 MHz
Operating RF channel	ONE	ONE
Modulation	CCK, DSSS, HT-OFDM	HT-OFDM
Sensitivity	Varying between -96 dBm ± 1 dB and -73 dBm ± 2 dB	
Antenna system	2x2 MIMO	2x2 MIMO
Max. Physical Layer Data Rate	300 Mbps	300 Mbps
Operating mode	Mesh Ad-Hoc	Mesh Ad-Hoc
Ant. connector	Type SMA Female x 2 Type TNC Female for option	Type SMA Female x 2
Interfaces (Waterproof, SnapLatch connector)	3 pins (DC In) 9 pins (Ethernet) 6 pins (RS232 Data & Reset)	3 pins (DC In) 9 pins (Ethernet) 6 pins (RS232 Data & Reset)
Input Voltage	12 - 24 VDC	12 - 24 VDC
Power consumption	Max. 12 W	Max. 12 W
Weight	340 g	340 g
Dimension	125 x 92 x 30, mm	125 x 92 x 30, mm
Waterproof	IP67	IP67





Omni-Directional 2.200-2500 MHz Gooseneck Antenna MIMO 2x2

ANT222502V-MGS-TF, Electrical Specification

Frequency Band	2200 – 2500 MHz
Gain	2 dBi
Nominal Impedance	50 Ω
VSWR	≤2.0:1
Polarization	Linear, Vertical
HPBW - Azimuth	360°
HPBW - Elevation	70°
Max. Power Handling	50 W
Operating Temperature	-40 °C~ +70 °C

Mechanical Specification

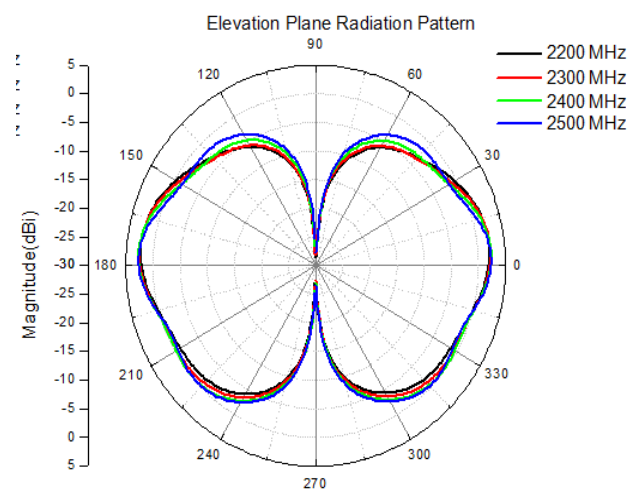
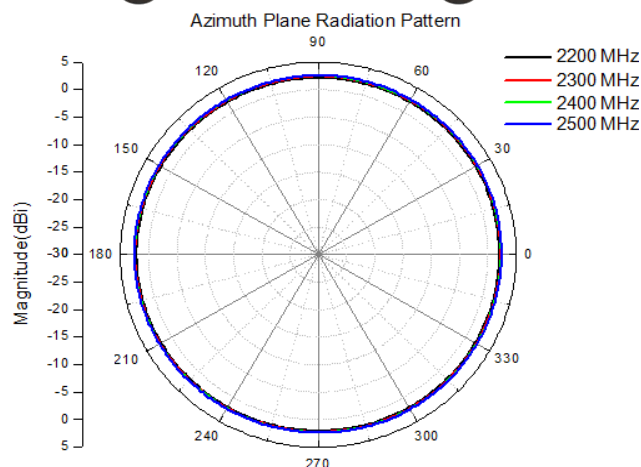
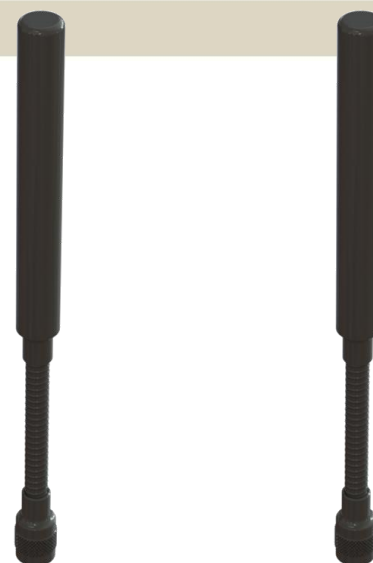
Connector	TNC, Male (Non-Rotating)
Length	210 ± 5.0 mm
Diameter	Φ 14.8 ± 1.0 mm
Weight	78 g
Color	Matte Black
Mounting	Connector mode locking

ANT222502H-MGS-TF, Electrical Specification

Frequency Band	2200 – 2500 MHz
Gain	2 dBi
Nominal Impedance	50 Ω
VSWR	≤2.0: 1
Polarization	Linear, Horizontal
HPBW-Azimuth	360°
HPBW- Elevation	75° (Approx.)
Max. Power Handling	10 W
Operating Temperature	-40 °C~ +70 °C

Mechanical Specification

Connector	TNC, Male (Non-Rotating)
Length	≤220 mm
Diameter	19.4 ± 1.0 mm
Weight	≤100 g
Radome Materials	GFRP
Color	Matte Black (or customer specified)
Mounting	Connector mode locking



Ordering information:

- ANTM2225G9D-M-NF 2200 – 2500 MHz 9dBi 2x2 MIMO Omni-directional antenna
- ANTM4959G10D-M-NF 4900 – 5900 MHz 10dBi 2x2 MIMO Omni-directional



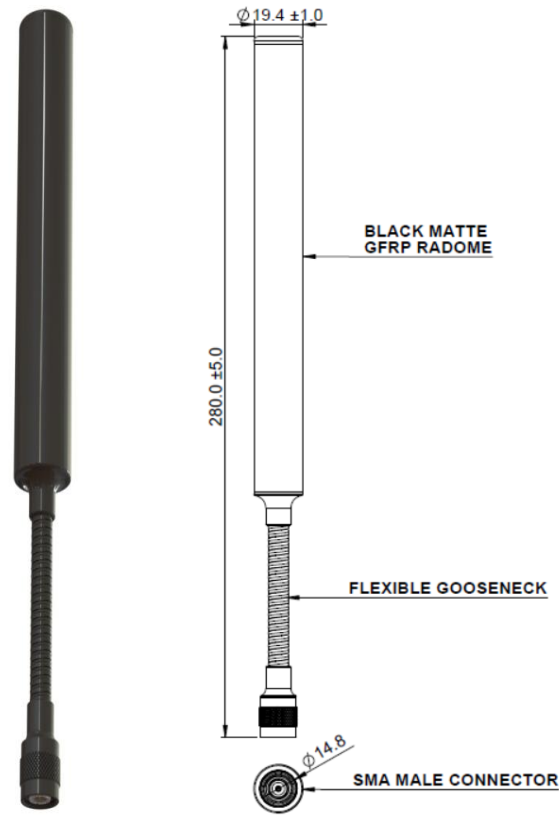
Omni-Directional 5.000-5.900 MHz Gooseneck Antenna MIMO 2x2

HYC-ANTV505905M-MGN-SM, Electrical Specification

Frequency Band	5000 – 5900 MHz
Gain	≥ 5 dBi 5.2 dBi @ 5000 MHz 6.1 dBi @ 5500 MHz 5.4 dBi @ 5900 MHz
Nominal Impedance	50 Ω
VSWR	$\leq 2.0 : 1$
Polarization	Linear, Horizontal
HPBW-Azimuth	360°
HPBW-Elevation	40° (Approx.)
Max. Power Handling	10 W
Operating Temperature	-40 °C ~ +70 °C

Mechanical Specification

Connector	SMA, Male (Non-Rotating)
Length	280 ± 5 mm
Diameter	$\Phi 19.4 \pm 0.5$ mm
Weight	≤ 100 g
Radome Materials	GFRP
Color	Matte Black
Mounting	Connector mode locking



Ordering info:

HYC-ANTV50595V-MGN-SM, C Band Vertical Polarized Omni-Directional Gooseneck Antenna

